

An architectural rendering of a modern hospital emergency department lounge. The space features large, curved, light blue modular sofas arranged in a semi-circle. In the center and around the sofas are several cylindrical coffee tables in light blue and green. The room has a high ceiling with large, irregular, brown acoustic panels and recessed linear lighting. Large windows in the background offer a view of the outside. The overall design is clean, bright, and functional.

AVENTURA HOSPITAL & MEDICAL CENTER

Emergency Department

IND 6257 | Graduate Design 5 | Fall 2020 Final
Prof. Phillip Abbott & Tatiana Guimaraes
Angela Gonzalez | Melissa Briceño

BUILDING DIAGRAMS

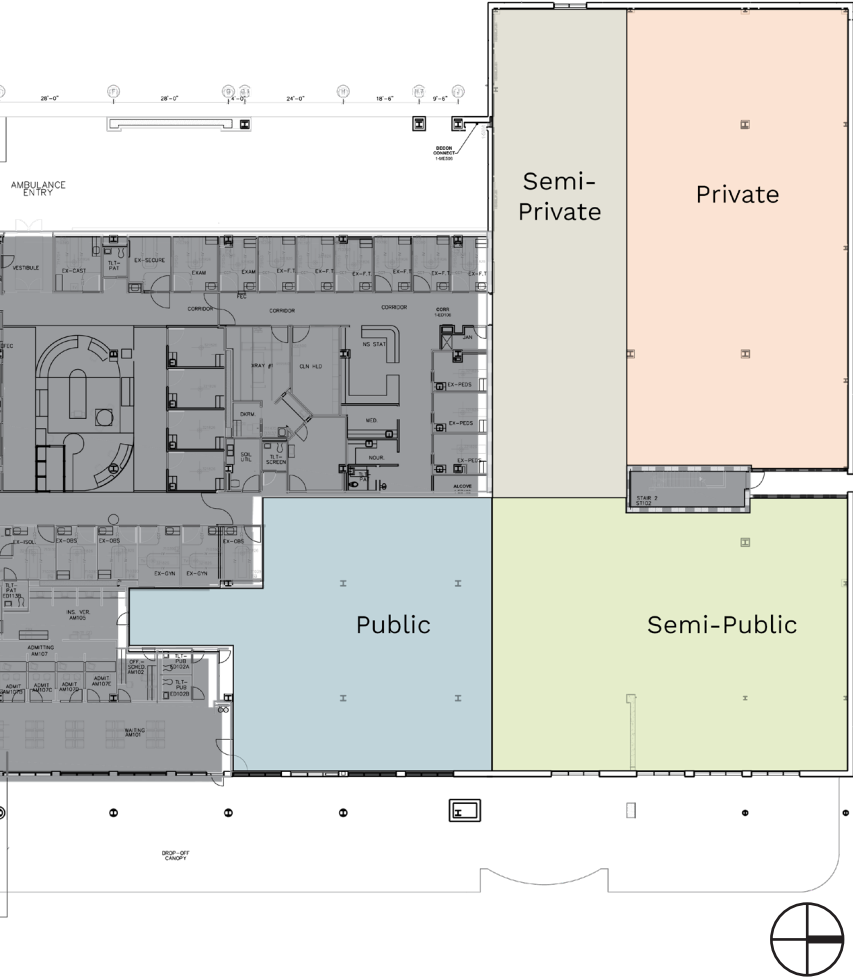
PARKING + SURROUNDING STRUCTURES



- LEGEND
- CORPORATE CENTER
 - PUBLIC STORAGE
 - DOCTOR'S OFFICES
 - WALKWAY FROM PARKING
 - BANK
 - DOCTOR'S OFFICES
 - PARKING LOT
 - WALKWAY FROM PARKING

There are mostly **office buildings** that surround the site, including a bank, healthcare offices, and a corporate center. Parking is **easily accessible** by walking, as it is positioned across the street from the site.

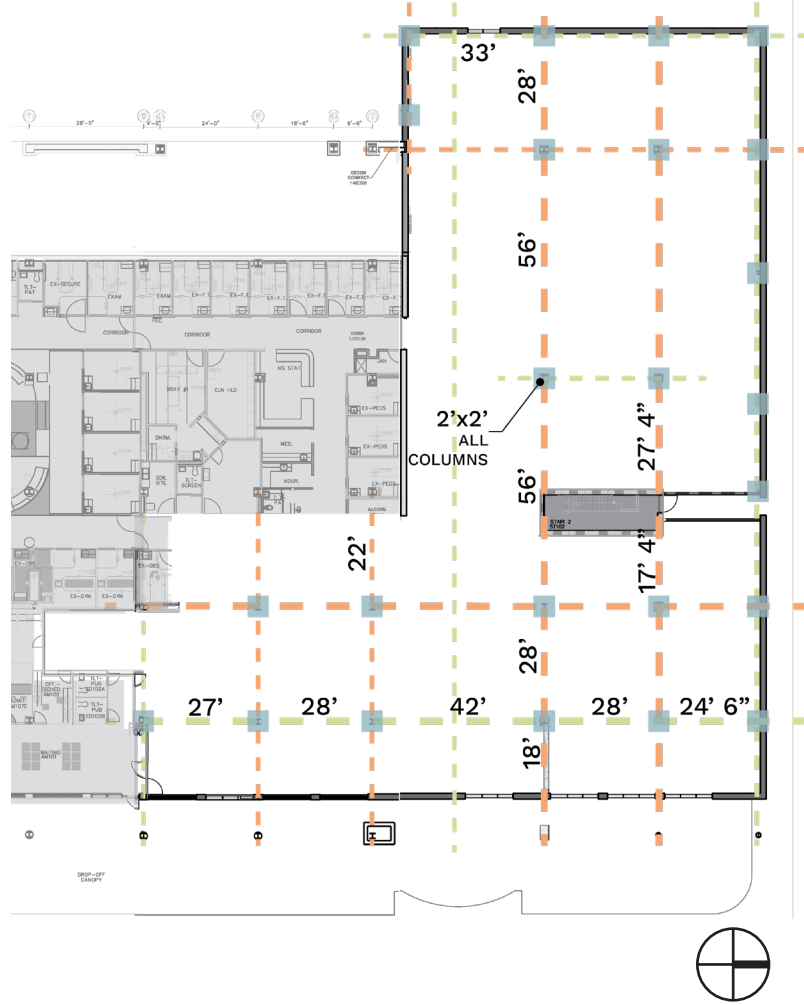
ZONING (PUBLIC/PRIVATE)



- LEGEND
- PUBLIC
 - SEMI-PUBLIC
 - SEMI-PRIVATE
 - PRIVATE

Public and semi-public areas are distributed due to the proximity to the **main point of access** and to windows. The **semi-private and private** areas are towards the back side of the building near the ambulance drop-off, due to the **need of accessibility** by the care providers.

STRUCTURAL GRID



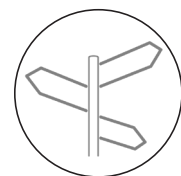
- LEGEND
- 2'X2' COLUMNS
 - STRUCTURE GRID
 - STRUCTURE GRID PROPORTIONS

The structural components that make up the floor plan follow a **vertical and horizontal grid** throughout. The longest **vertical span** runs 56' across, and the longest **horizontal span** runs 42' across. There is a clear proportional relationship, both horizontally and vertically, which illustrate a **mirrored floor plan**.

USERS & NEEDS



PATIENT



Wayfinding



Comfort



Universal
Design

- Require **formal** interaction with **care providers** for supervision and **informal** interaction with **family** members.
- Patient should feel safe in their environment, **protected** by caregivers and staff, and **emotionally supported** by family and caregivers.



CARE PROVIDER



Access



Control



Efficiency

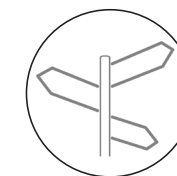


Comfort

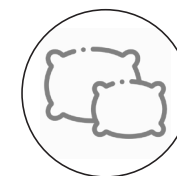
- **Mutual** psychological and physical support among care providers and administrative staff is **essential for efficiency**.
- **Frequent interaction** is necessary between care providers and patients, as well as family members.



FAMILY



Wayfinding



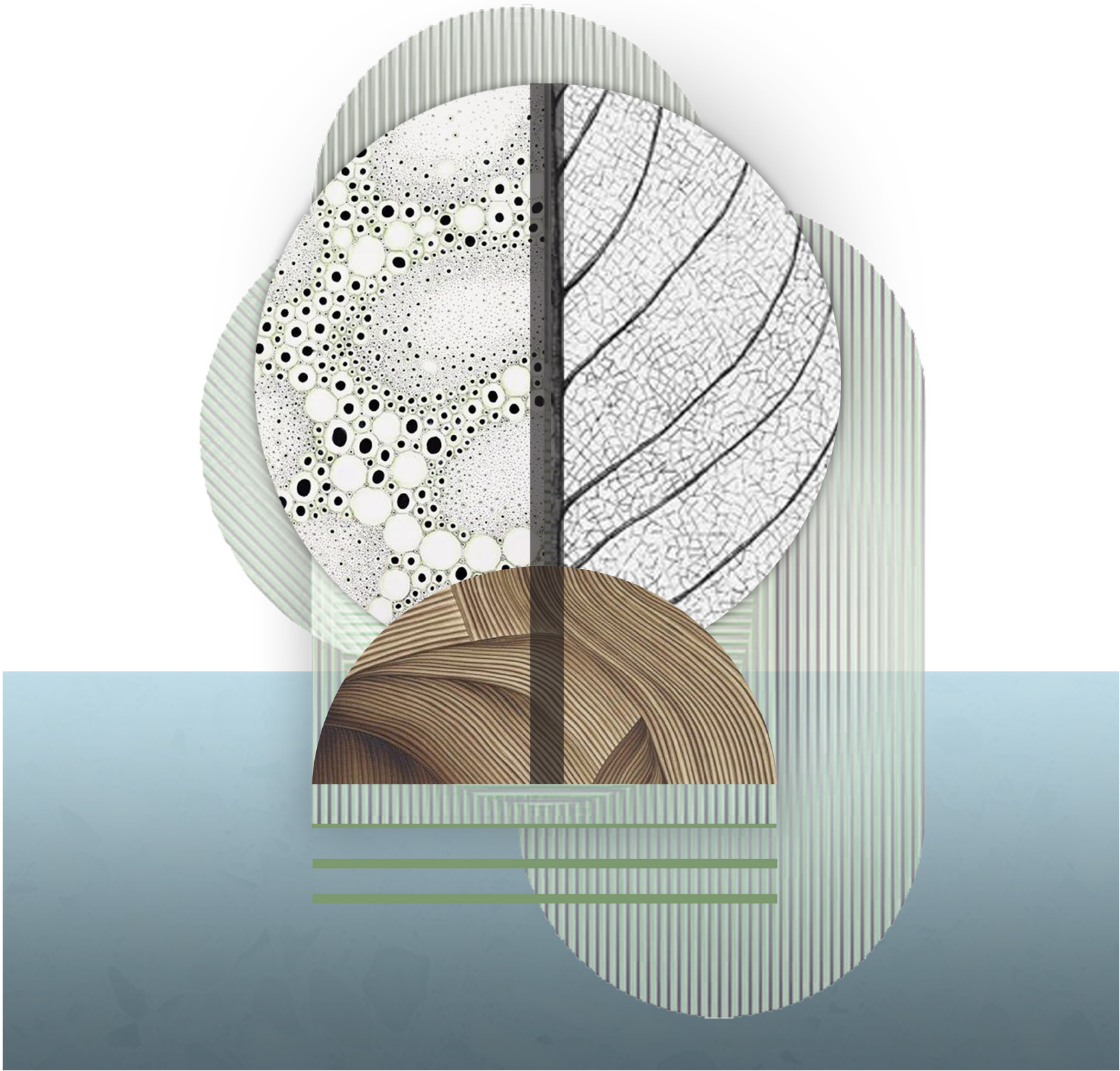
Comfort



Universal
Design

- Maintaining proper **communication** between family members and care providers regarding patients' treatment can afford a sense of **relief**.
- Considering the **role** of family members as a **support system** to patients is essential for the patients' **wellbeing**.

MATERIALITY CONCEPT



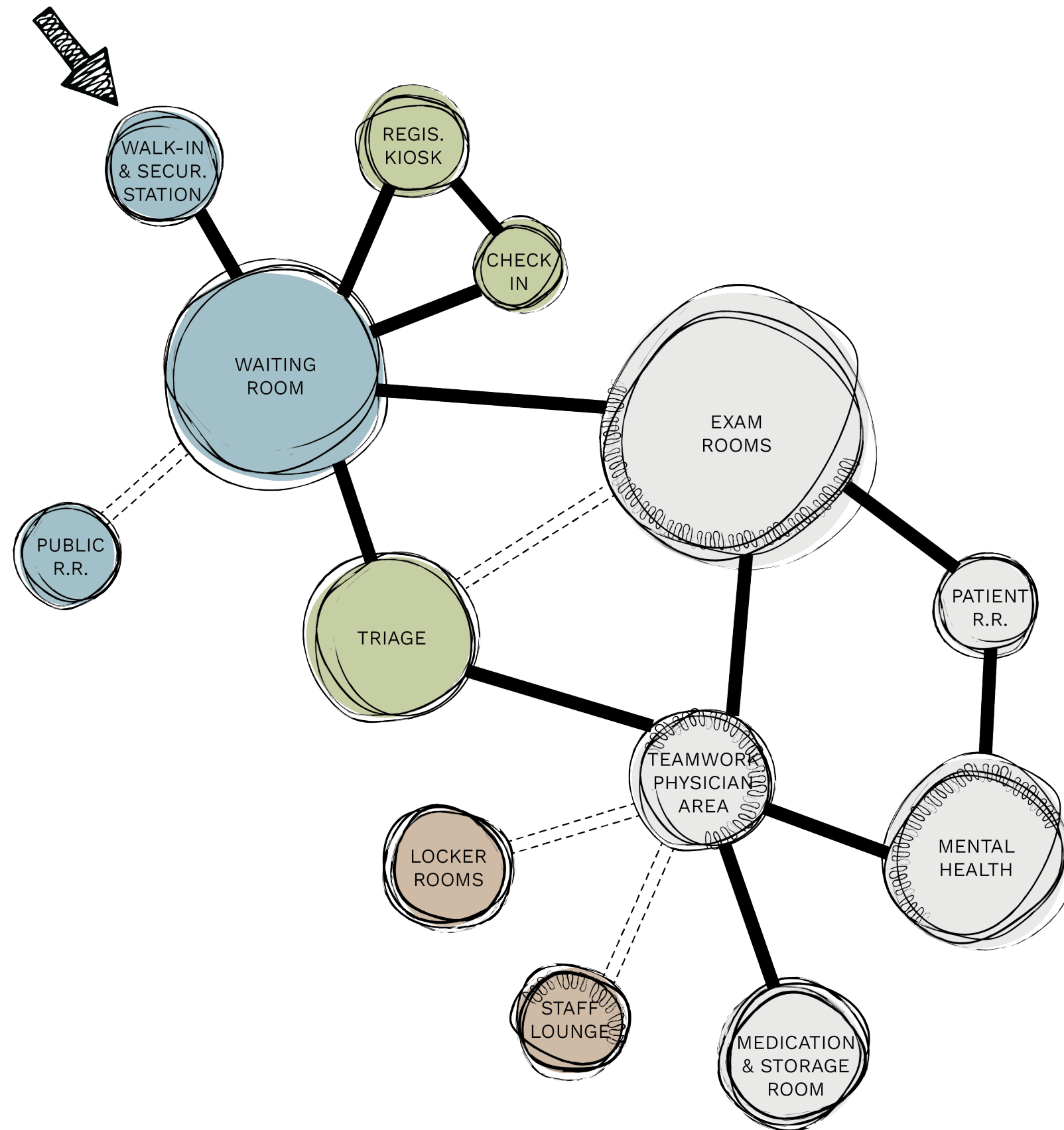
Health as Expanding Consciousness by M.A. Newman

The **nurse** is the **guide** that helps the **patient** realize ways in which they can **expand their consciousness** by changing their **patterns**. These patterns affect a person's **health**, whether it is through disease or non-disease.

PATTERN • DUALITY • INTERCONNECTED • NUCLEUS



ADJACENCY DIAGRAMS



LEGEND

- WALK-IN/ENTRY
- RECEPTION/REGISTRATION
- EMERGENT/URGENT
- ADMINISTRATIVE
- CONVENIENT ADJACENCY
- IMMEDIATE ADJACENCY
- ➔ ENTRANCE / EXIT

DESIGN DIAGRAMS



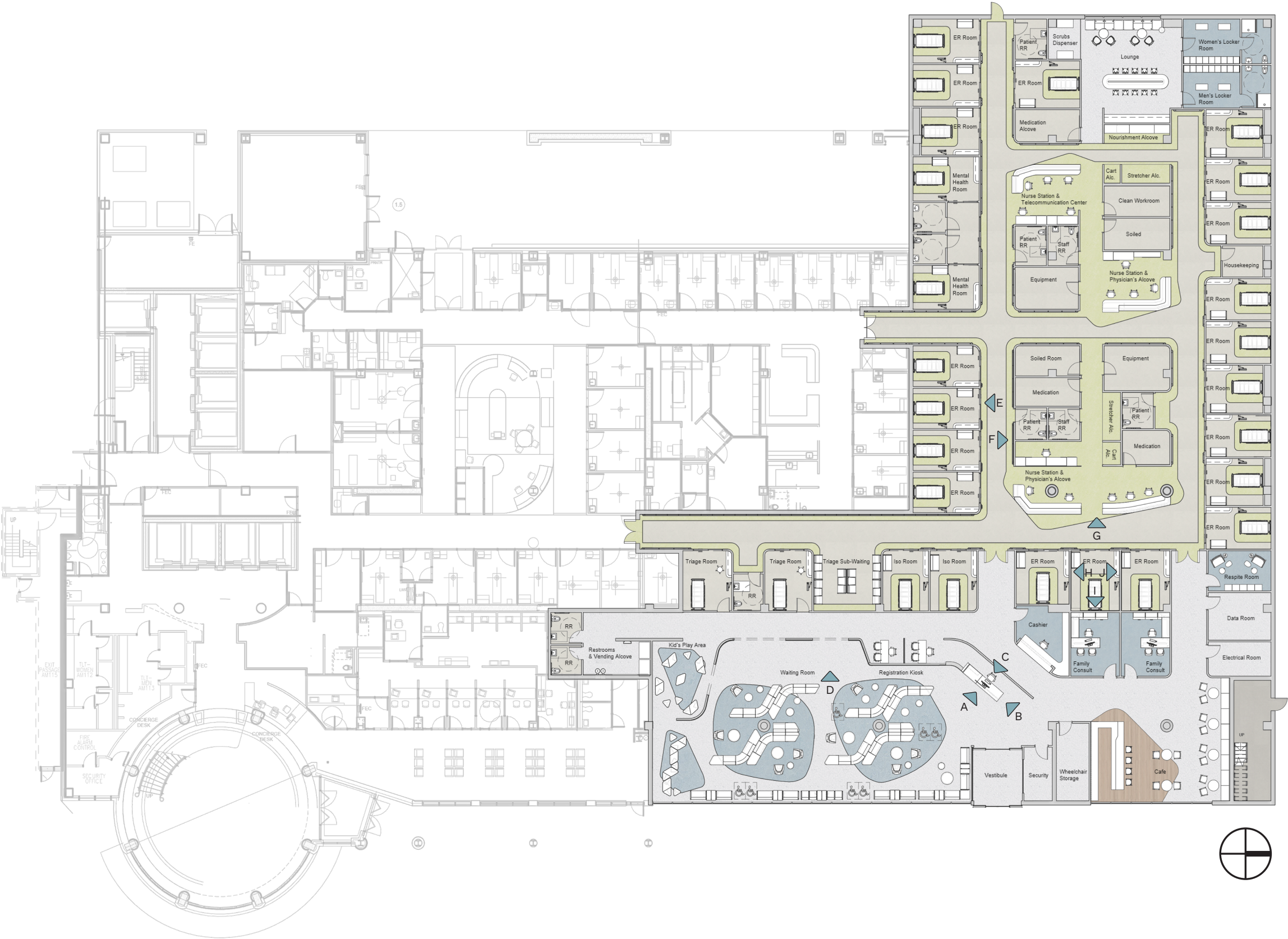
PARTI DIAGRAM



FUNCTIONAL DIAGRAM

FLOOR PLAN

SCALE: 3/64" = 1' 0"

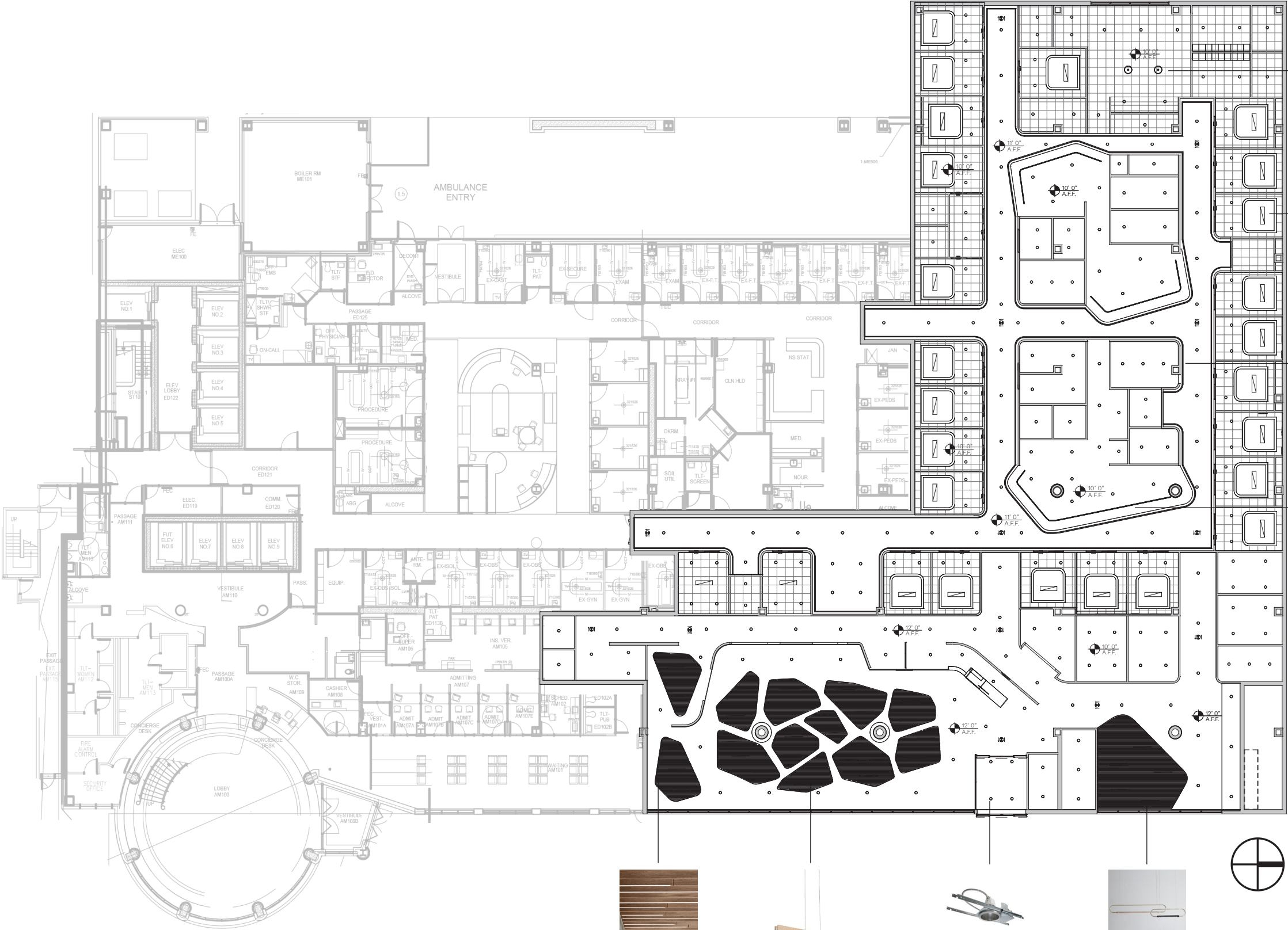


FLOOR FINISHES



REFLECTED CEILING PLAN

SCALE: 3/64" = 1' 0"



Lounge Pendant Focused



Exam Rooms Light Task
SRC: 1.25



Cove Lighting Ambient



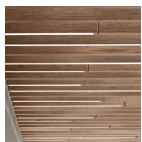
Nurse Station Linear Light Task

LIGHTING GOALS:

- RECEPTION - 30 FC
- TEAM WORK - 50 FC
- CORRIDORS - 10 FC
- EXAM ROOM - 50 FC

LEGEND

- EXIT SIGN
- RECESSED DOWN LIGHTING
- LOUNGE PENDANT
- WOOD-LOOK BAFFLE LIGHT
- EXAM ROOMS LIGHT
- NURSE STATION LINEAR LIGHTING
- COVE LIGHTING
- ACOUSTIC BAFFLES



Wood-Look Acoustic Baffle



Wood-Look Baffle Lighting
Spacing Criteria: 0.82



Recessed Light Ambient
Spacing Criteria: 0.97



Cafe Pendant Decorative Lighting

RECEPTION & REGISTRATION



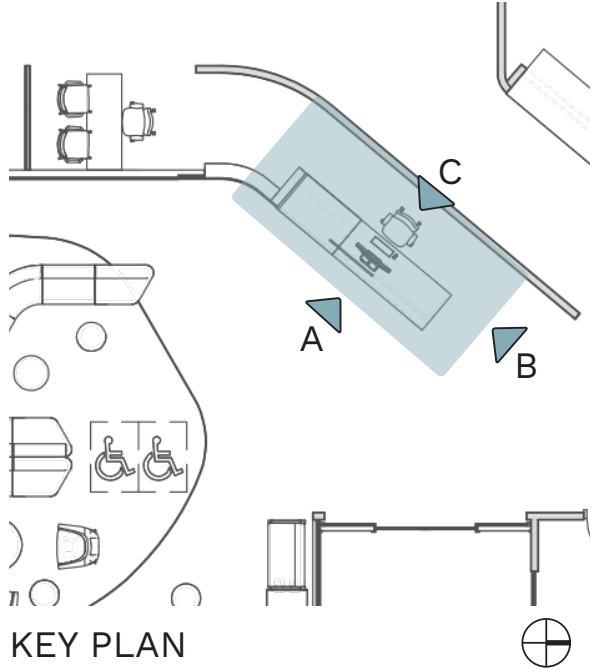
ELEVATION A - RECEPT. DESK FRONT



ELEVATION B - RECEPT. DESK SIDE



ELEVATION C - RECEPT. DESK BACK

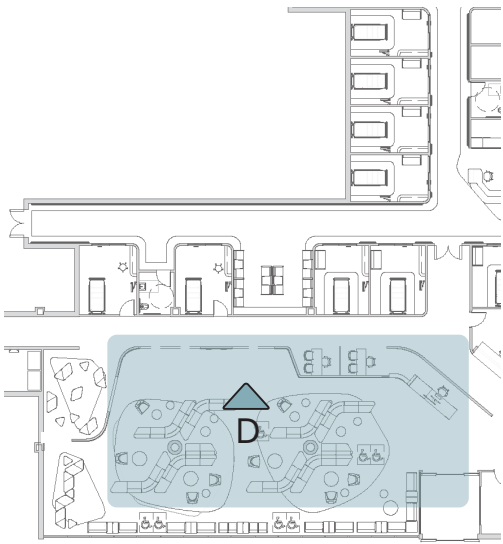


KEY PLAN

REGISTRATION & SEATING AREA



ELEVATION - D



KEY PLAN

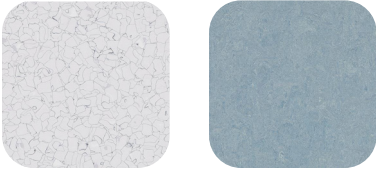


SEATING AREA



KIDS PLAY AREA

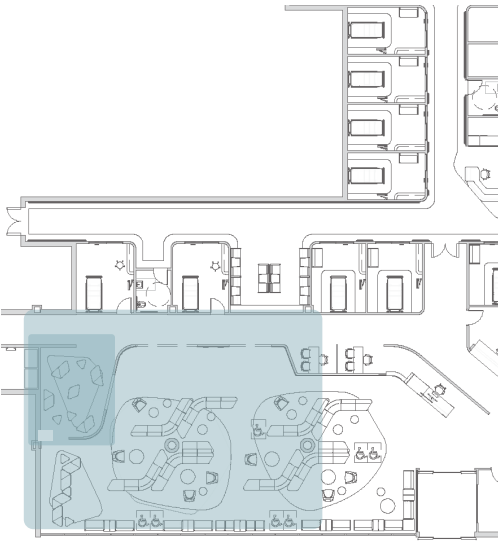
FLOOR FINISHES



WALL FINISHES



TEXTILE FINISHES



KEY PLAN





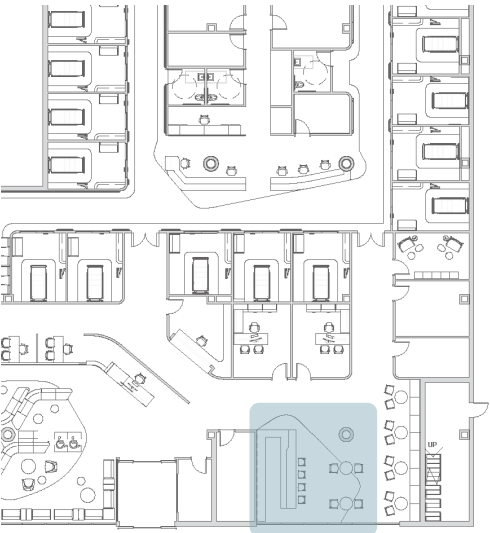
WALL & CEILING FINISHES



UPHOLSTERY FINISHES



FLOORING FINISHES



KEY PLAN



ER CORRIDOR



WALL FINISHES



MILLWORK FINISHES



FLOORING FINISHES



ELEVATION E



KEY PLAN



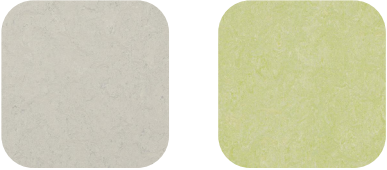
NURSE STATION



WALL FINISHES



FLOORING FINISHES



KEY PLAN



ELEVATION F



ELEVATION G

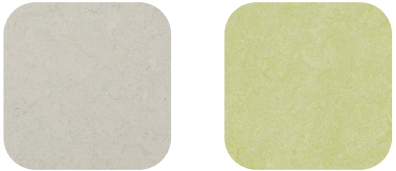
EXAM ROOM



WALL FINISHES



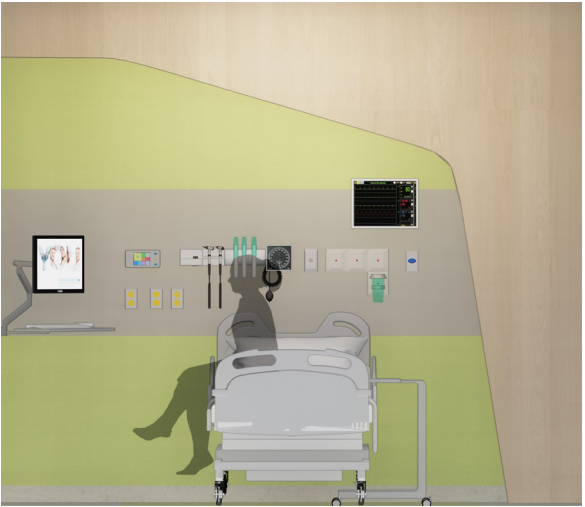
FLOORING FINISHES



UPHOLSTERY FINISH



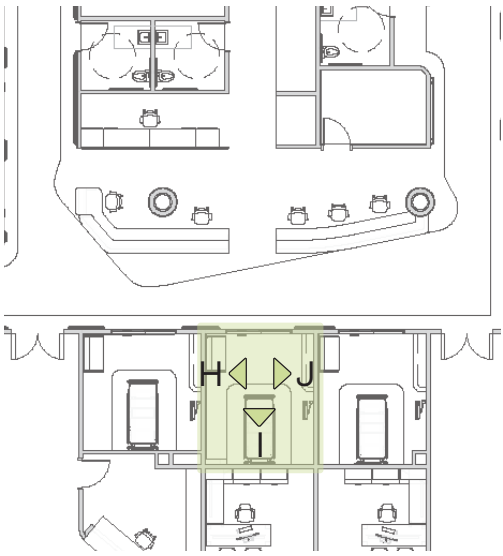
ELEVATION H



ELEVATION I



ELEVATION J



KEY PLAN



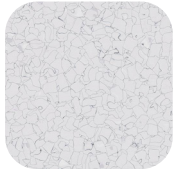
STAFF LOUNGE



MILLWORK FINISHES



FLOORING FINISHES



KEY PLAN



THANK YOU